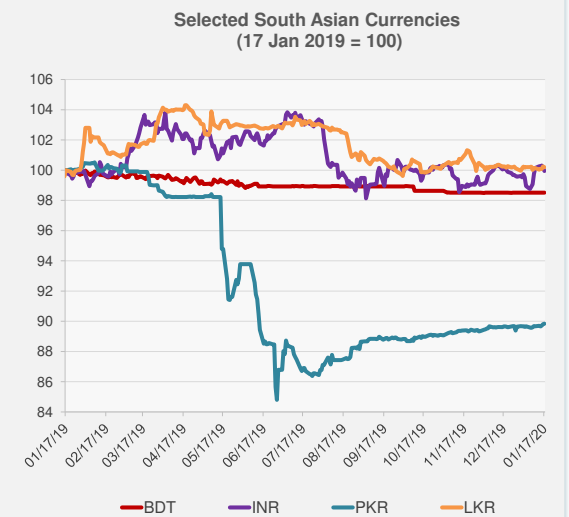
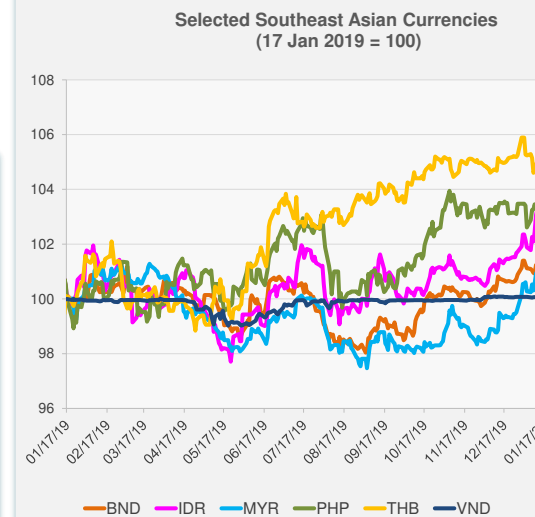
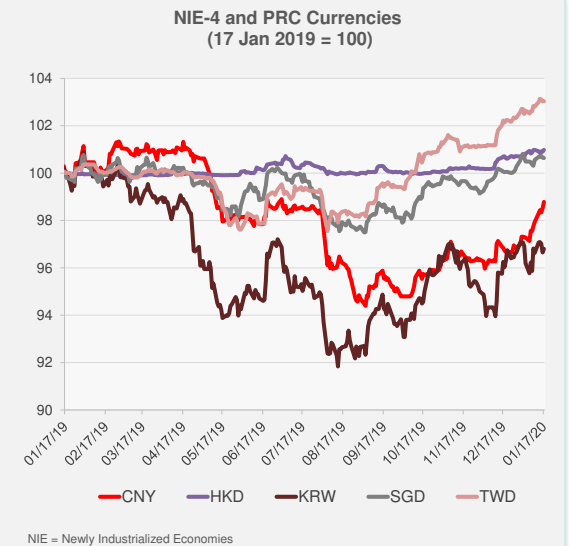
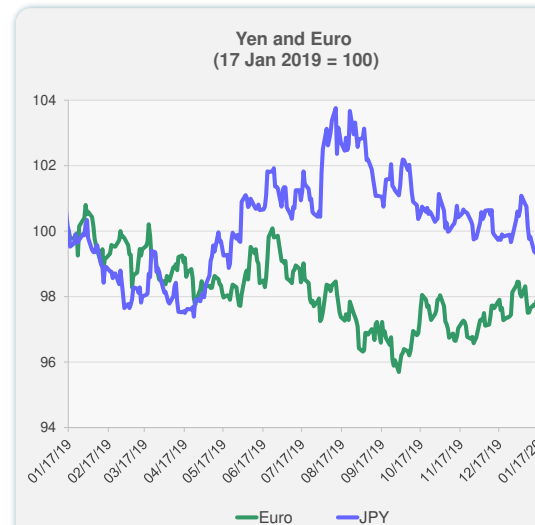
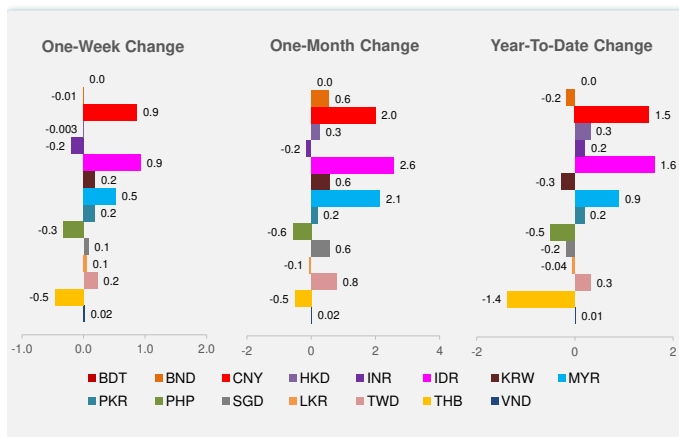


	Latest Closing	% change from Previous Day	% change from 01-Jan-20
Euro	0.90	-0.40	-1.07
Japanese yen (JPY)	110.14	0.02	-1.25
Bangladeshi taka (BDT)	84.88	0.00	0.00
Brunei dollar (BND)	1.35	-0.02	-0.16
Chinese yuan (CNY)	6.86	0.28	1.51
Hong Kong dollar (HKD)	7.77	0.07	0.31
Indian rupee (INR)	71.08	-0.21	0.20
Indonesian rupiah (IDR)	13,645.00	-0.01	1.62
Korean won (KRW)	1,159.50	0.16	-0.28
Malaysian ringgit (MYR)	4.05	0.20	0.90
Pakistan rupee (PKR)	154.61	0.03	0.19
Philippine peso (PHP)	50.90	-0.42	-0.49
Singapore dollar (SGD)	1.35	-0.01	-0.18
Sri Lanka rupee (LKR)	181.25	-0.06	-0.04
Taipei,China NT dollar (TWD)	29.94	0.00	0.32
Thai baht (THB)	30.39	-0.06	-1.38
Vietnamese dong (VND)	23,171.00	0.02	0.01

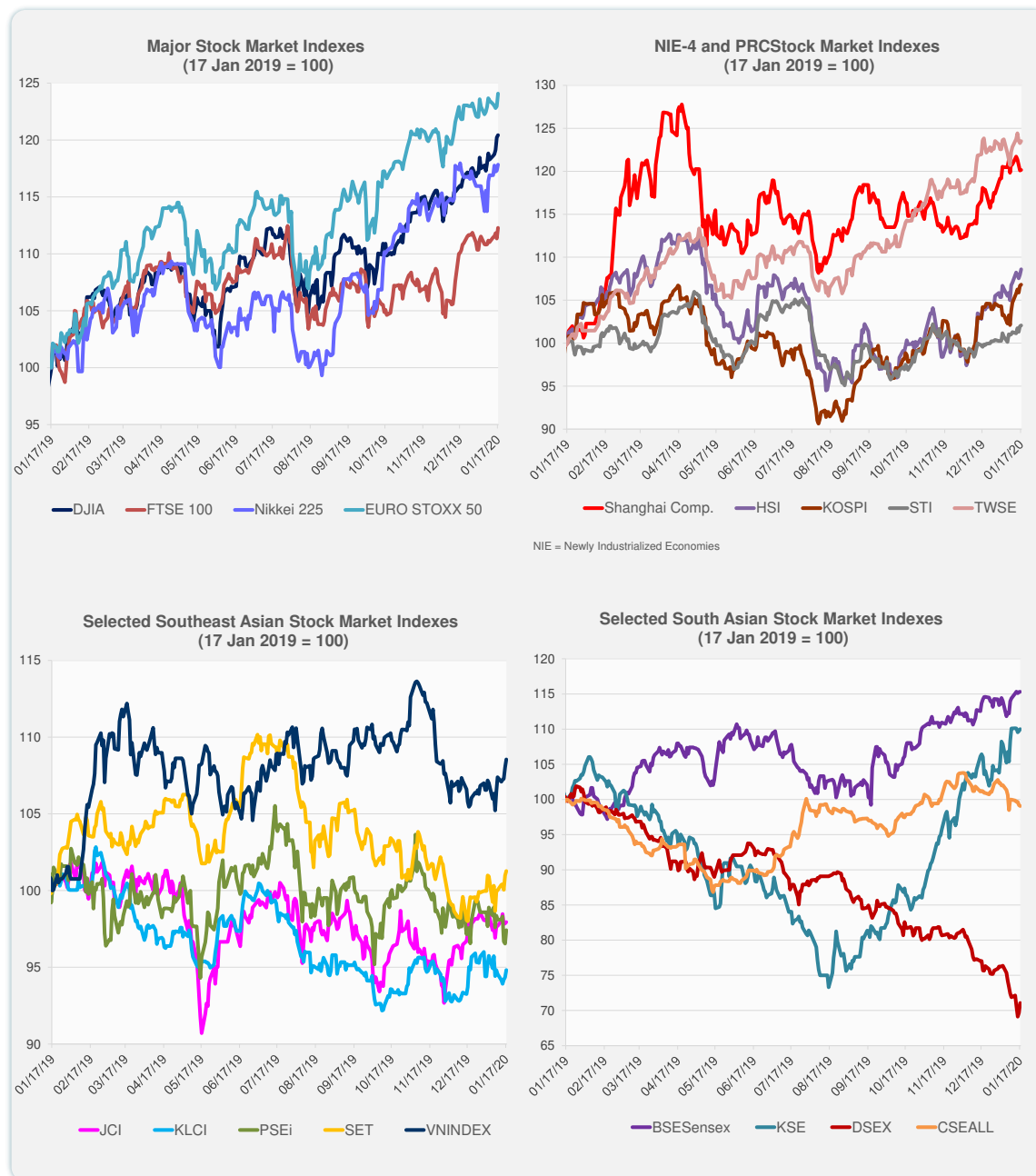
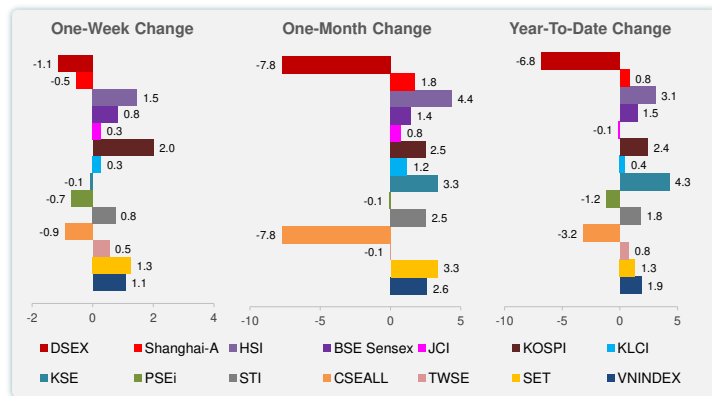


Note: Negative/Decreasing values indicate depreciation of local currency, and positive/increasing values indicate appreciation.
Source: Bloomberg.



Source: Bloomberg.

	Latest Closing	% change from Previous Day	% change from 01-Jan-20
US Dow Jones Ind Avg	29,348.10	0.17	2.84
US NASDAQ	9,388.94	0.34	4.64
US S&P 500	3,329.62	0.39	3.06
UK FTSE 100	7,674.56	0.85	1.75
EURO STOXX 50	3,808.26	0.90	1.69
Japan NIKKEI 225	24,041.26	0.45	1.63
Bangladesh DSEX	4,149.83	2.01	-6.81
PRC Shanghai Comp.	3,075.50	0.05	0.83
Hong Kong, China HSI	29,056.42	0.60	3.07
India BSE Sensex	41,945.37	0.03	1.55
Indonesia JCI	6,291.66	0.09	-0.13
Korea, Rep. of KOSPI	2,250.57	0.11	2.41
Malaysia KLCI	1,595.81	0.50	0.44
Pakistan KSE 100	43,167.77	0.24	4.27
Philippines PSEi	7,722.58	0.91	-1.19
Singapore STI	3,281.03	0.09	1.81
Sri Lanka CSEALL	5,932.92	-0.14	-3.20
Taipei, China TWSE	12,090.29	0.19	0.78
Thailand SET	1,600.48	0.29	1.31
Viet Nam VNINDEX	978.96	0.48	1.87



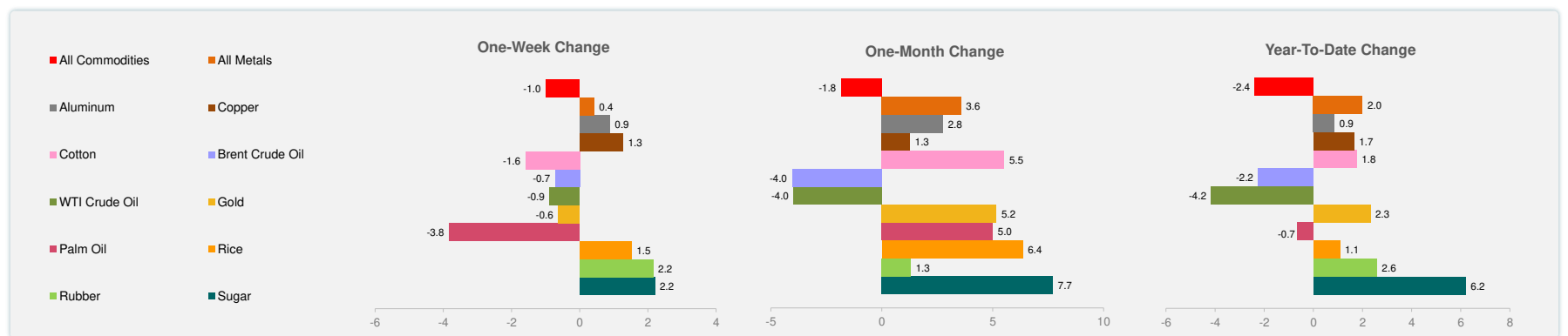
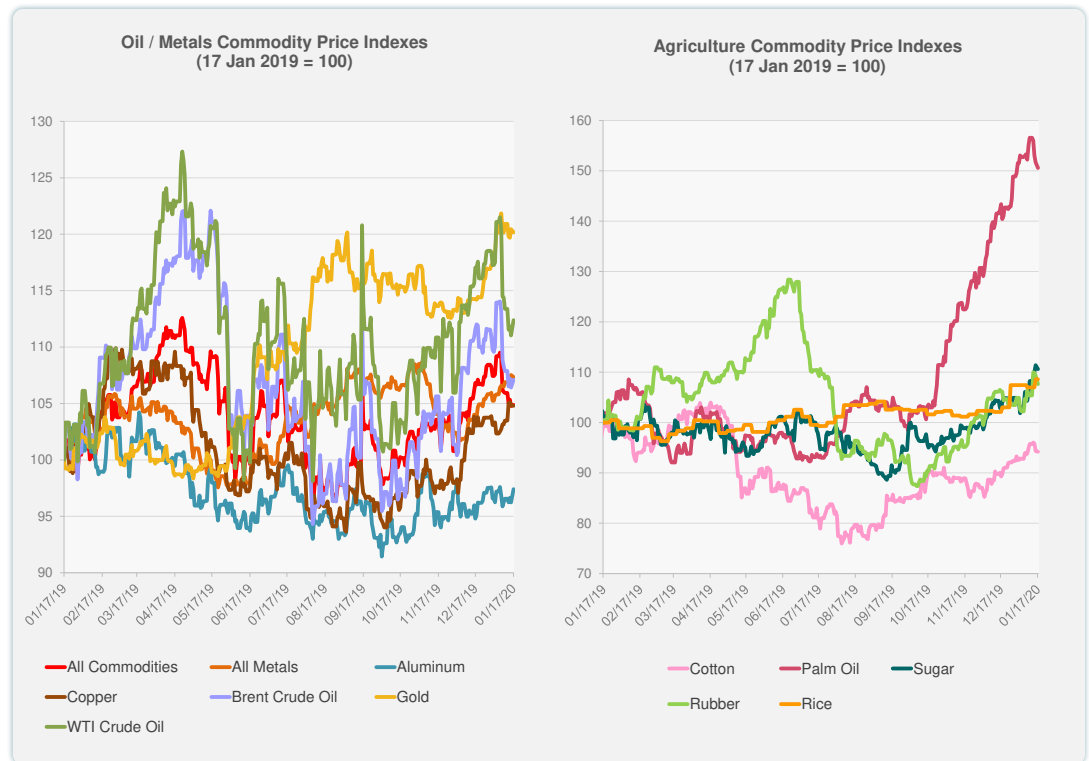
Source: Bloomberg.



Source: Bloomberg.

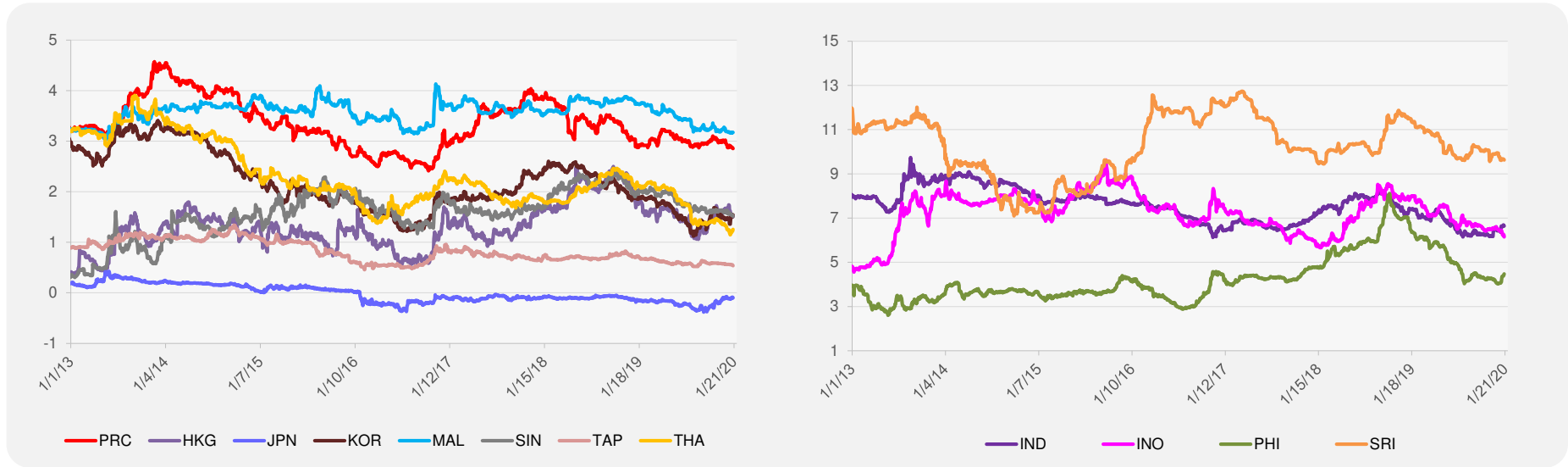
	Unit	Latest Closing	% change from Previous Day	% change from 01-Jan-20
S&P All Commodities	US\$	425.84	0.09	-2.38
S&P All Metals	US\$	221.89	-0.17	2.00
Aluminum	US\$/metric ton	1,796.50	1.23	0.86
Copper	US\$/metric ton	6,251.00	-0.02	1.66
Cotton	US cents/lb	67.47	-0.15	1.76
Brent Crude Oil	US\$/barrel	64.82	0.65	-2.25
WTI Crude Oil	US\$/barrel	58.52	1.23	-4.16
Gold	US\$/troy oz	1,552.51	-0.24	2.32
Palm Oil	US\$/metric tonne	734.73	-0.74	-0.65
Rice ¹	US\$/metric ton	468.00	0.00	1.08
Rubber ²	US\$/kg	170.60	-1.56	2.59
Sugar	US cents/lb	14.38	-0.69	6.20

¹ Latest closing price from 15 January 2020.
² Singapore Exchange, Ribbed Smoked Sheet Rubber.

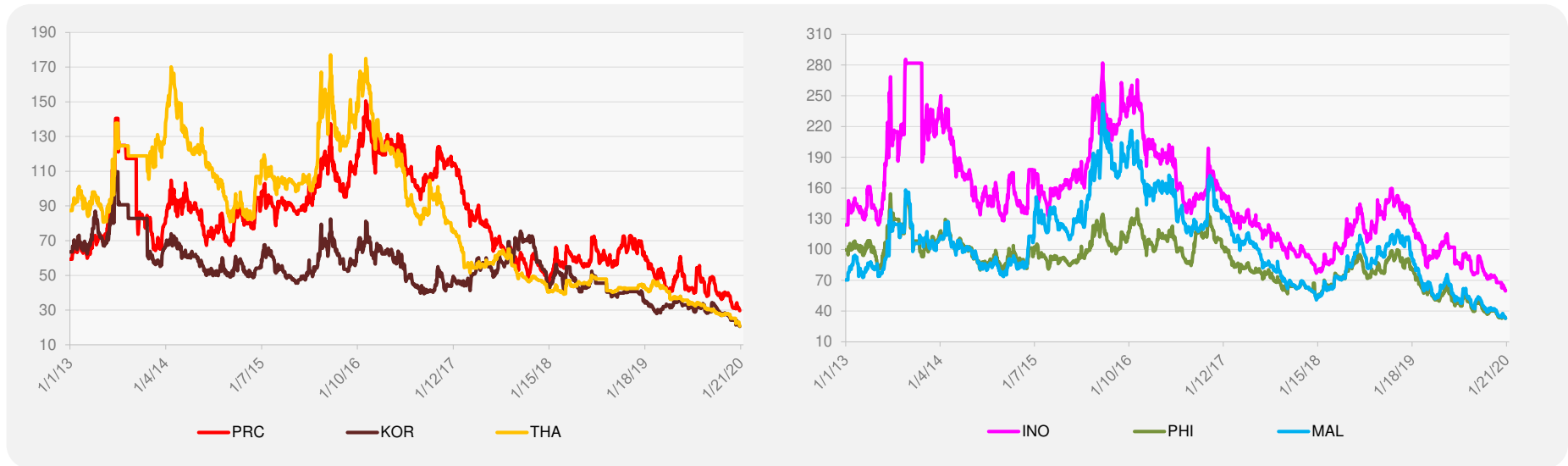


Source: Bloomberg.

5-YEAR LOCAL CURRENCY GOVERNMENT BOND YIELDS (%)



5-YEAR CREDIT DEFAULT SWAP¹



¹ In USD and based on sovereign bonds.
Source: Bloomberg.